



Canadian Manufacturer

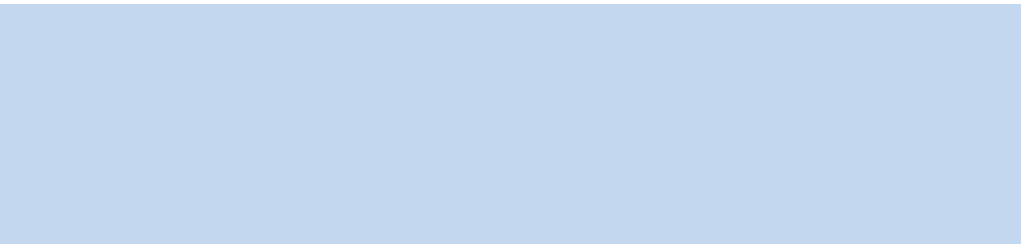
EXCALIBUR

Housings • Membranes • Cartridges • Filtration Systems



Quality through innovation







Jumbo Filter Housings

Jumbo filter housings for large capacity filtration requirements, including high flow applications. Jumbo filter housings provide greater velocity, reducing the number of housings for high flow applications. The housings are available in both 10" and 20" lengths.

Features & Benefits:

- Available in 10" and 20" lengths
- Pressure release for easy cartridge replacement
- Double O-Ring seal that is leak proof
- Maximum operating pressure is 85 PSI (5 BAR)
- Maximum operating temperature 100°F (37°C)
- Burst pressure over 500 PSI (30 BAR)
- Blue sumps with black caps and pressure release
- FNPT pipe threads

Part No.	Dimensions	Thread	Length	Initial PSI @ GPM	Colour
FH 10BB075	13 3/8" x 7 1/4" (333 mm x 184 mm)	3/4" (19 mm)	10" (254 mm)	2 PSI @ 15 GPM (0.1 BAR @ 57 LPM)	BLUE
FH 20BB075	23 3/8" x 7 1/4" (594 mm x 184 mm)	3/4" (19 mm)	20" (508 mm)	2 PSI @ 15 GPM (0.1 BAR @ 57 LPM)	BLUE



Wrench for Jumbo Filter Housings
FH WR500



Excalibur Wrench for Filter Housings
FH WR600



Wrench for Standard Filter Housings
FH WR100



**Single Mounting Bracket for Jumbo Filter Housings
With Screws**
FH FM25AC



**Double Mounting Bracket for Jumbo Filter Housings
With Screws**
FH FM30AC



**Triple Mounting Bracket for Jumbo Filter Housings
With Screws**
FH FM40AC



Melt Blown Polypropylene Cartridges Standard and Jumbo

Melt Blown polypropylene cartridges are manufactured from 100 percent pure polypropylene fibres. These cartridges are designed for turbidity, sediment, suspended matter removal, providing water purity. These cartridges will not cause any water tastes, odours or colour when used within the required temperature range. The polypropylene provides excellent chemical resistance and is not prone to bacteria contamination.

Features & Benefits:

- 100 percent polypropylene fibers
- Polypropylene cartridges form a true density for premium filtration
- 40°F to 100°F (4°C to 37°C) operating temperatures
- 30 to 100 PSI operating range (2 BAR to 6 BAR)
- Polypropylene cartridges remove dirt, grit, sand, rust, suspended matter and turbidity

Part No.	Dimensions	Micron Rating	Initial PSI @ GPM	Type
SMF PP1005	2 ½" x 10" (64 mm x 254 mm)	5	0.3 PSI @ 2 GPM (0.2 BAR @ 8 LPM)	Melt Blown
SMF PP10B05	4 ½" x 10" (114 mm x 254 mm)	5	<1 PSI @ 10 GPM (0.1 BAR @ 38 LPM)	Melt Blown
SMF PP20B05	4 ½" x 20" (114 mm x 508 mm)	5	<1 PSI @ 20 GPM (0.1 BAR @ 76 LPM)	Melt Blown



Hydro-Cure Dual Gradient Density Polypropylene Cartridges

Dual Gradient Density Polypropylene Cartridges are manufactured with 100% pure polypropylene fibers and are sized to fit Jumbo filter housings. Our dual gradient polypropylene cartridges will reduce turbidity, dirt, grit, suspended matter, sand, rust and scale.

Features & Benefits:

- 100 percent pure polypropylene cartridges
- Sized to fit the Jumbo housings
- Polypropylene cartridges form a true density for premium filtration
- 40°F to 100°F (4°C to 37°C) operating temperature
- 30 to 100 PSI operating range (2 BAR to 6 BAR)
- Polypropylene dual gradient cartridges remove dirt, grit, sand, rust, suspended matter and turbidity
- Multi-depth filtration
- Tested and certified by NSF International against NSF/ANSI Standard 42 for material requirements only.

Part No.	Dimensions	Micron Rating	Initial PSI @ GPM	Type
SMF DGD10BB2501	4 ½" x 10" (114 mm x 254 mm)	25/1	<1 PSI @ 10 GPM (0.1 BAR @ 38 LPM)	Melt Blown
SMF DGD10BB2505	4 ½" x 10" (114 mm x 254 mm)	25/5	<1 PSI @ 10 GPM (0.1 BAR @ 38 LPM)	Melt Blown
SMF DGD10BB5025	4 ½" x 10" (114 mm x 254 mm)	50/25	<1 PSI @ 10 GPM (0.1 BAR @ 38 LPM)	Melt Blown
SMF DGD20BB2501	4 ½" x 20" (114 mm x 508 mm)	25/1	<1 PSI @ 20 GPM (0.1 BAR @ 76 LPM)	Melt Blown
SMF DGD20BB2505	4 ½" x 20" (114 mm x 508 mm)	25/5	<1 PSI @ 20 GPM (0.1 BAR @ 76 LPM)	Melt Blown
SMF DGD20BB5025	4 ½" x 20" (114 mm x 508 mm)	50/25	<1 PSI @ 20 GPM (0.1 BAR @ 76 LPM)	Melt Blown



Acid Washed Coconut Shell Carbon Block Filter Cartridges

Acid Washed Coconut Shell Carbon Block Cartridges are highly effective at removing chlorine, chloramines, tastes, odours and many volatile chemicals from potable drinking water supplies. The carbon block filter cartridges are made from acid washed coconut shell carbon. They are an excellent choice for residential, food service, commercial and industrial applications.

Features & Benefits:

- Premium high capacity removes bad taste & odour, chlorine, chloramines and volatile chemicals
- Enhanced dirt-holding capacity

Part No.	Dimensions	Micron Rating	Initial PSI @ GPM	Chlorine Taste & Odour Reduction @ Flow Rate
SMF CBC1005	2 ½" x 10" (64 mm x 254 mm)	5	3.7 PSI @ 2 GPM (0.3 BAR @ 8 LPM)	>20,000 gallons @ 2 GPM (75,700L @ 7.6 LPM)
SMF CBC1010	2 ½" x 10" (64 mm x 254 mm)	10	3.7 PSI @ 2 GPM (0.3 BAR @ 8 LPM)	>20,000 gallons @ 2 GPM (75,700L @ 7.6 LPM)
SMF CBC10B05	4 ½" x 10" (114 mm x 254 mm)	5	4.6 PSI @ 2 GPM (0.3 BAR @ 8 LPM)	>50,000 gallons @ 2 GPM (189,300L @ 7.6 LPM)
SMF CBC20B05	4 ½" x 20" (114 mm x 508 mm)	5	8.5 PSI @ 2 GPM (0.3 BAR @ 8 LPM)	>150,000 gallons @ 2 GPM (567,800L @ 15.1 LPM)



*cartridges not included

Jumbo Filtration Systems

Double and triple filtration systems which are assembled on a single wall mounting bracket, less filter cartridges.

Features & Benefits:

- Inlet/Outlet pressure gauges
- Ball valves for easy installation
- Multi housing systems include wall mount brackets and hardware
- All systems are shipped pre-assembled
- Double O-Ring seal that is leak proof
- Maximum operating pressure 85 PSI (5 BAR)
- Maximum operating temperature 100°F (37°C)

Part No.	Dimensions (LxWxH)	Flow Rate	Housing QTY	Housing Size
FH DH10C	25 3/4" x 8" x 17" (645 mm x 203 x 432 mm)	Up to 20 GPM (76 LPM)	2	3/4" (19 mm)
FH TH10C	34" x 8" x 17" (864 mm x 203 x 432 mm)	Up to 20 GPM (76 LPM)	3	3/4" (19 mm)
FH DH20C	25 3/4" x 8" x 28" (645 mm x 203 x 711 mm)	Up to 20 GPM (76 LPM)	2	3/4" (19 mm)
FH TH20C	34" x 8" x 28" (864 mm x 203 x 711 mm)	Up to 20 GPM (76 LPM)	3	3/4" (19 mm)



Doulton Ceramic Sterasyl Cartridges

The Doulton Sterasyl Ceramic Cartridges are third party validated to remove bacteria such as ecoli, vibrio cholera, shigella, salmonella typhi, kiebssiella terrigena, crypsporidium and giardia.

Features & Benefits:

- Fits universal standard 10" filter housings
- Filtration to .5 micron/.9 absolute
- Filtration efficiency of 99.99 percent
- Highly efficient bacteriological filtration
- Ideal for reverse osmosis pre filtration
- NSF 42 and 53 Certified

Part No.	Dimensions	Micron Rating	Flow Rate
CRF W9220402	2" x 9 3/4" (51 mm x 248 mm)	0.5 (0.9 Absolute)	0.75 GPM @ 50 PSI (2.83 LPM @ 3.4 BAR)



Polishing Cartridges

The Inline Granular Activated Acid Washed Coconut Shell Carbon Polishing Cartridge utilizes Acid Washed Coconut Shell Carbon in the manufacture of our Polishing Cartridges. These cartridges can remove high levels of chlorine, chloramine, industrial chemicals and sediment.

Features & Benefits:

- Sealed cartridges keeping polishing cartridges sanitary
- Removes sediment, chlorine, chloramines, industrial and volatile chemicals
- The cartridge filtration capacity is 5,000 gallons
- Temperature range 40°F to 100°F (4°C to 37°C)
- Pressure range 30 -100 PSI (2 - 6 BAR)
- 10 micron rating
- Used with reverse osmosis systems or as an inline filter cartridge

Part No.	Dimensions	Thread	Micron Rating	Flow Rate
SMF AICRO	2" x 10" (50 mm x 254 mm)	1/4" (6 mm)	10	0.75 GPM @ 50 PSI (2.83 LPM @ 3.4 BAR)



Reverse Osmosis Membrane

Thin Film Composite High Purity Reverse Osmosis Membrane that removes volatile chemicals and reduces total dissolved solids by over 95 percent, producing high purity drinking water.

Features & Benefits:

- Removes heavy metals and industrial toxic chemicals
- 35 gallons per day water volume at 77 degrees F.
- Sanitary encapsulated membrane
- Quick connect and release membrane element for easy installation and replacement
- Tested and certified by WQA to NSF/ANSI Standard 58

Part No.

RO TWRM35



Carbon Block Cartridge

Twist-Lock replacement cartridge that reduces chlorine taste and odor and increases water clarity.

Features & Benefits:

- Helps protect small appliances that use filtered water
- 2,500 gallon capacity
- 5 micron
- Easy installation/quick change, no mess
- Tested and certified by WQA to NSF/ANSI Standard 42

Part No.

RO TLROC



Pleated Sediment Cartridges

These pleated cartridges are manufactured from pleated polyester media for sediment, sand, grit, turbidity, and suspended matter removal for general water filtration. The polyester media is pleated around a polypropylene core for support and the end caps are immersed in a thermo vinyl plastic. The 1 Absolute and the 0.35 nominal pleated cartridges are used with NSF certified Ultraviolet Systems as pretreatment for less than 1 NTU.

Part No.	Dimensions	Micron Rating	Initial PSI @ GPM
SMF PL20B035	4 ½" x 20" (114 mm x 508 mm)	0.5 (0.9 Absolute)	<1 PSI @ 35 GPM (.1 BAR @ 132 LPM)
SMF PL20B01A	4 ½" x 20" (114 mm x 508 mm)	1 (Absolute)	<1 PSI @ 35 GPM (.1 BAR @ 132 LPM)



Reverse Osmosis Membrane

Reverse Osmosis Membrane creates high purity drinking water, removing total dissolved solids such as chemicals and heavy metals. RO TFC75 has a 75 gallon per day water volume while RO TFC100 has a 100 gallon per day volume. Both are certified to NSF Standard 58.

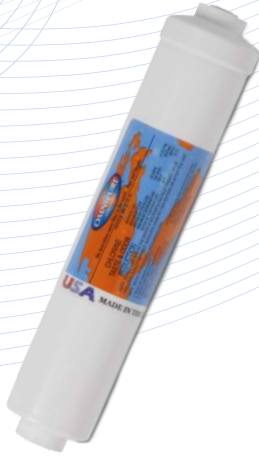
Part No.	Flow Rate
RO TFC75	75 GPD
RO TFC100	100 GPD



Reverse Osmosis Pump

Reverse Osmosis Pump increases water pressure going into the RO unit.

Part No.	Flow Rate
RO BP110V	75 GPD



**Omnipure ½ Carbon ½ Calcite
Chlorine Removal / Acidic Water Neutralizer**

This cartridge removes acidity from your reverse osmosis drinking water by raising the PH from 5.5 to neutral. It also reduces the chlorine and chemicals in your water supply, providing great tasting water.

Calcite is a crushed and screened white marble media, which can be used to neutralize acidic or low pH waters to a neutral, less corrosive effluent. Carbon filters sediment and chemicals such as chlorine. Replace cartridge when rated capacity (750 gallons) is reached, or when flow becomes too slow.

Part No.	Dimensions	Capacity	Flow Rate	Maximum Pressure	Temperature
SMF K2551 BB1	2" x 10" (50 mm x 254 mm)	750 Gallons	0.50 GPM (1.9 LPM)	125 PSIG	35-100 °F (2-38 °C)



**Omnipure Calcite/Corosex
Acidic Water Alkaline Neutralizer**

This high alkalinity cartridge removes acidity from your reverse osmosis drinking water by raising the PH from 4.5 to neutral.

Calcite is a crushed and screened white marble media, which can be used to neutralize acidic or low pH waters to a neutral, less corrosive effluent. Corosex is a specially processed hard, bead like magnesia, adapted for use in filters to neutralize acidity by increasing the pH value.

Part No.	Dimensions	Capacity	Flow Rate	Maximum Pressure	Temperature
SMF K2551 BB2	2" x 10" (50 mm x 254 mm)	750 Gallons	0.50 GPM (1.9 LPM)	125 PSIG	35-100 °F (2-38 °C)

Replacement Cartridges + Membranes for Reverse Osmosis Systems



Model : EWR 30500

Smart Purifier™

Stage	1. PP + Carbon	2. Membrane	3. Coconut Carbon
Part No.	SMF RO500PCF	RO 500M	SMF RO500PF



Model : EWR 3035

Value Reverse Osmosis System

Stage	1. Carbon	2. Membrane	3. Carbon
Part No.	RO TLROC	RO TWRM35	RO TLROC

Replacement Cartridges + Membranes for Reverse Osmosis Systems



Model : EWR 5075C



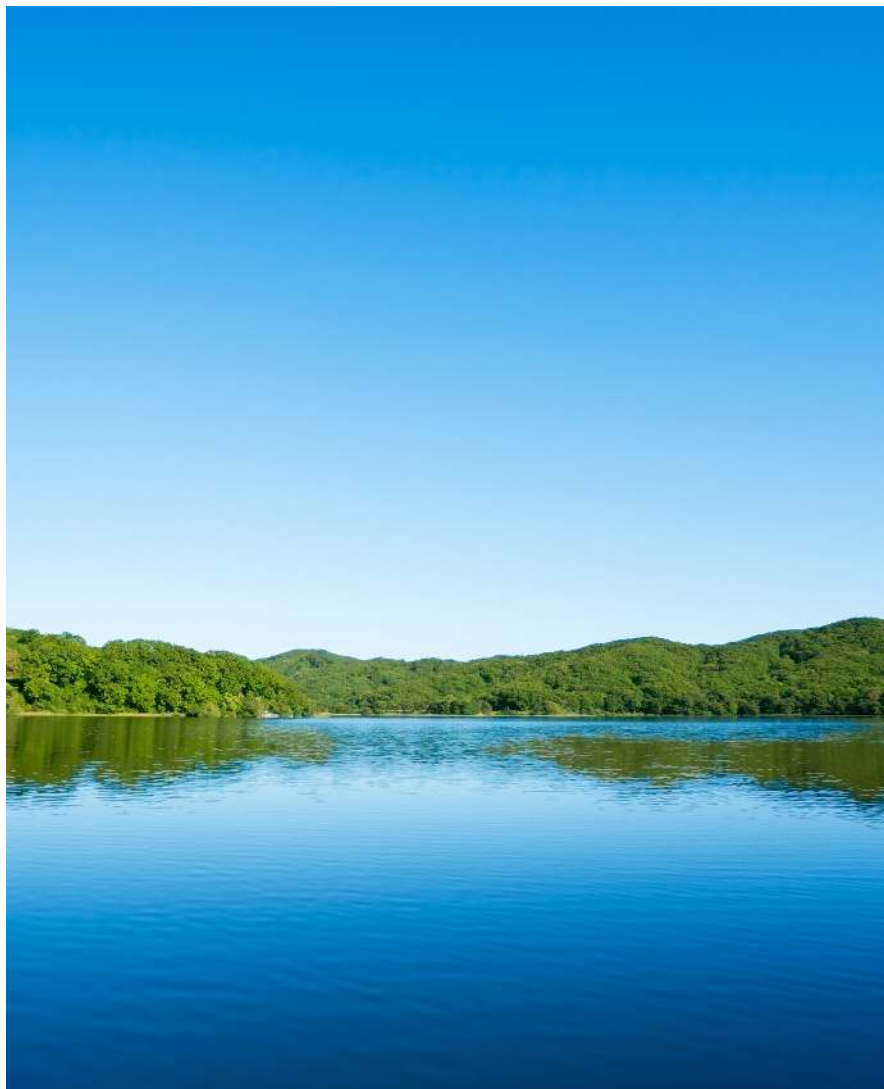
Model : EWR 5100C

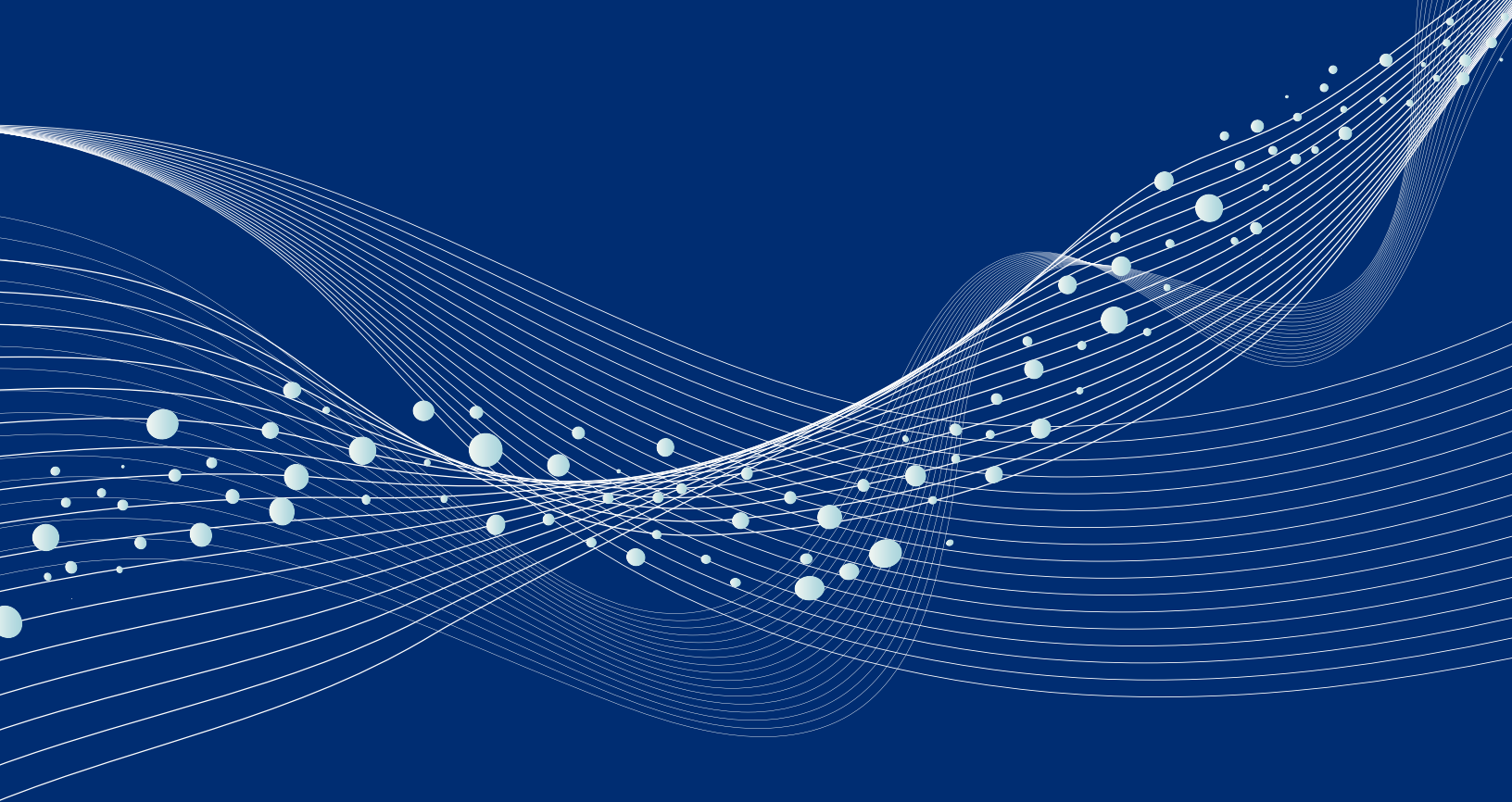
Superior Reverse Osmosis System

Stage	Part No.
1. Sediment	SMF PP1005
2. Carbon	SMF CBC 1010
3. Carbon	SMF CBC 1005
4. Membrane	RO TFC75
5. Carbon	SMF AICRO
Optional Stages: Neutralizer or Alkaline	K2551 BB1 or K2551 BB2

Premium Reverse Osmosis System

Stage	Part No.
1. Sediment	SMF PP1005
2. Carbon	SMF CBC 1010
3. Carbon	SMF CBC 1005
4. Pump	RO BP110V
5. Membrane	RO TFC100
6. Carbon	SMF AICRO
Optional Stages: Neutralizer or Alkaline Ceramic	K2551 BB1 or K2551 BB2 CRF W9220402





EXCALIBUR WATER SYSTEMS INC.

T. 705 733 8900 E. info@excaliburwater.com

www.excaliburwater.com

Authorized Dealer:

